

NEW!

▶ L.U.C.A.S 1000



L.U.C.A.S 1000

LIGHTWEIGHT ULTRA COMPACT ACTIVE SYSTEM



*The power pack for the
mobile entertainer!*

L.U.C.A.S 1000

LIGHTWEIGHT ULTRA COMPACT ACTIVE SYSTEM



Facts & Features:

- Ideal for solo entertainers, mobile DJs and acoustic gigs where more power reserves are desired.
- Basic system: one 15" subwoofer with one pair of 2-way satellites (8" + 3/4")
- 100° x 50° Constant Directivity horns with 3/4" compression drivers
- 600-watt RMS bass power amp with DynaClip™ limiter for more bottom-end punch
- Dual 150-watt RMS mid/high-range power amp with OPTO-limiter for pure and transparent stereo sound
- 2-way active electronics with OFR™ technology in the subwoofer, enhances the frequency response of the system for a smoother sound
- Subsonic filter protects amp and speaker from potentially harmful extreme sub-low frequencies
- 24-dB-per-octave electronic crossover for a cleaner signal with finer detail
- Balanced Neutrik combo input jacks (XLR and 1/4") and XLR outputs
- Tricolor LEDs show limiter status for both subwoofer and satellites
- Automatic Circuit Breaker
- Ground-lift switch to eliminate hum
- Locking Speakon® connectors
- Factory-equipped with castors and locking strap
- Two 23 ft. (7 m) Speakon cables included!



As every HK AUDIO active system, L.U.C.A.S 1000 is not just two powered cabinets on stands - it's a complete sound solution consisting of a subwoofer, satellites and meticulously matched electronics. To achieve these complete solutions, our engineers crafted new technologies just for these

systems. Six unique features set every HK AUDIO active system apart from ordinary powered speakers:

Opto-Limiter for mid/high-range power amp



- improved signal quality due to lower distortion near threshold
- enhanced performance resulting from higher useable volume levels
- applies studio technology to live performance systems
- protects speaker from overload

DynaClip™ Limiter for LF power amp



- more low-end punch through more efficient energy usage
- protects the speaker from dangerous inharmonic distortion
- perfectly matched with the LF power amp

OFR™ Optimized Frequency Response technology



- no additional system EQ necessary
- frees up your external EQ to balance the room
- reduces self-noise
- eliminates sound-destroying phase problems
- perfectly matched to each system
- adjusts to varying volume levels: full-spectrum sound at every level

Subsonic Filter



- protects power amp and speaker from harmful ultra-sub-low frequencies
- frees up more output power in the usable frequency range
- enables cleaner and tighter bass reproduction

24 dB/octave Electronic Crossover with phase correction



- steep slope of 24 dB per octave for a cleaner signal with finer detail
- unlike passive crossovers, no signal power loss

Easy set-up and handling

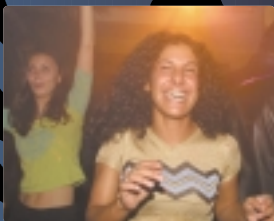


- all components designed to function together as one system
- easy handling, faster setup
- less stress = more fun + better music

Power and punch for every party



Today the job of a solo entertainer or DJ is more demanding than ever: keeping up with constantly changing trends, expanding your repertoire, honing your craft and keeping up with the latest gear. On top of all this, you're called upon to deliver just the right entertainment for different crowds from one gig to the next, from weddings to birthdays, and from corporate events to all-night dance gigs. Flexibility and adaptability are the names of the game, and the sound reinforcement system has to keep up with these demands.



We know that as a single entertainer you want your system to be easy to move and quick to set up.

After all, time is money, and nobody is paying you for setup and sound check. We also know you occasionally need your system to be capable of

sounding great even at low volume – as well as powerful enough to rattle the rafters and keep a crowd on their feet. Older, much more cumbersome speaker systems tend to be good for one type of venue only, but they struggle to deliver the goods in situations they were not made for. **L.U.C.A.S 1000** is a new type of sound system designed from the ground up to combine flexibility with ease of use and to produce great sound in every situation that a solo entertainer or DJ would face.



The Secret behind the Success

The new **L.U.C.A.S 1000** is based on HK AUDIO's proven L.U.C.A.S concept: one central subwoofer with built-in electronics paired with two compact satellites.



More than just a couple of active cabinets mounted on tripods, **L.U.C.A.S 1000** is a complete sound reinforcement solution with meticulously matched electronics. Unlike bulky conventional full-range cabinets that are clumsy to set up, there is no heavy lifting with **L.U.C.A.S 1000**. Just place the two lightweight satellites onto tripods and leave the subwoofer on the ground, where it produces very solid bass very efficiently.



Even more compact and powerful than the "classic" L.U.C.A.S system, the new **L.U.C.A.S 1000** takes this design concept to the next level and answers the needs of entertainers looking for higher sound-pressure levels and first-class sound in a relatively small, self-contained system. The electronics have been painstakingly matched to the specific drivers used in the system to ensure superior impulse response and transparent sound, to protect the system from overloading, and to make the system easy to operate. And this, mind you, not only when playing loud but also at low volumes.



Less Work, more Fun!

Playing a show can't be easier than with **L.U.C.A.S 1000**. Wheel in the package, set up the satellites and plug in a few cables. You don't have to worry about tweaking frequencies and finessing the right levels. All you have to do for a stereo setup is patch the two audio cables from the mixer to the subwoofer, connect two speaker cables from the subwoofer to the satellites, and plug the subwoofer into the mains. Whether you're a mobile DJ, a solo entertainer, or a musician who plays acoustic gigs in clubs and pubs, with **L.U.C.A.S 1000** it takes just minutes from load-in to showtime.



From the Top...

In the 200-watt satellites, the combination of an 8" speaker for clear and powerful mids and a 3/4" compression driver for silky-smooth highs results in maximum speech intelligibility and more detailed dimensional reproduction of reverb and delay effects. A Constant Directivity horn with a 100° x 50° coverage pattern is responsible for a wide and even dispersion of the high frequencies. The baffle is tilted downwards so that ceiling reflections can be minimized and the sound energy is projected onto the audience much more efficiently than with traditional cabinets.



...to the Bottom...

The fundamental design of L.U.C.A.S systems exploits the fact that frequencies below a specific frequency range become less directional. Instead, sub-low frequencies project in all directions and their origin can no longer be accurately pinpointed by the human ear. The single 15" direct-loaded 600-watt subwoofer combines left and right into one bass signal. A separate subwoofer-level control on the unit's top panel gives you greater control depending on the venue and the type of music played. The two **L.U.C.A.S 1000** satellites complete the picture, i.e. the full-stereo image. With less gear to carry, you can imagine how much more enjoyable the gigs become, before, during, and after.



...Plenty of Power!

A dual 150-watt RMS perfectly matched stereo power amp with OPTO-Limiter ensures that the two satellites deliver a crystal-clear stereo signal without unwanted sound coloration or distortion. HK AUDIO's OFR™ Technology and the 24-dB-per-octave crossover ensure that your audiences will enjoy the pure and transparent sound everyone is looking for. The 600-watt RMS bass power amp with DynaClip™ limiter delivers plenty of bottom-end punch. The Subsonic filter protects the 15" subwoofer and the power amp from harmful sub-lows and frees up more output power in the usable frequency range. For better visual monitoring, tricolor LEDs located on the control panel indicate the status of the OPTO-Limiters and the DynaClip™ limiter.



L.U.C.A.S 1000 couldn't be any easier to transport: simply set the subwoofer on its factory-equipped castors and fasten the satellites to it with the included locking straps – done deal!



1 SATELLITE LIMITER STATUS LED

These tricolor LEDs indicate the current status of the OPTO-limiters used on the satellites. Green means a signal is present; yellow shows that some soft limiting is occurring; red indicates full limiting.

2 SUBWOOFER LIMITER STATUS LED

This tricolor LED indicates the status of the low frequency Dynaclip™ limiter. Green = signal present; yellow = soft limiting; red = full limiting.

3 POWER ON LED

This LED lights up when the power switch is set to ON and the system is connected to a mains power source (AC electrical outlet).

4 GAIN LEFT / RIGHT

This knob serves to match the power amp to the input signal level; use it to prevent distortion when the incoming signal level is too high.

5 SUBWOOFER LEVEL

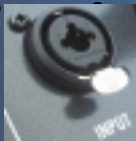
Adjust to taste, depending on the needs of the venue and the style of music.

6 GROUND

Ground-lift switch that separates the signal ground from the chassis ground in order to eliminate hum. Push this button in to sever the ground circuit.

7 INPUT LEFT / RIGHT

These electronically balanced Neutrik combo sockets will accept the line-level output signal from your mixing console using either an XLR or 1/4" TRS connector or a 1/4" TS unbalanced connector.



8 THROUGH LEFT / RIGHT

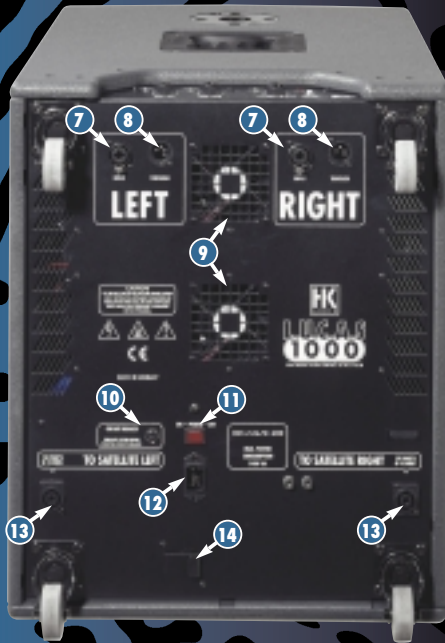
Parallel output used to route the left and right LINE signal out, e.g. to other systems, individual components, monitor power amps, etc.

9 VENTILATION FANS

These fans keep the power amp section running cool.

10 AUTOMATIC CIRCUIT BREAKER

You'll never need to search for a replacement fuse again.



11 POWER SWITCH

On/off switch for the L.U.C.A.S 1000 system. This red rocker switch will illuminate as an indication that the unit is powered up.

12 MAINS SOCKET (AC INPUT)

For connecting the L.U.C.A.S 1000 subwoofer to an AC power source via the included power cord.

13 SATELLITE OUT LEFT / RIGHT

Speakon Output (150 watts / 4 ohms) for connecting the L.U.C.A.S 1000 satellites to the power amp in the subwoofer housing.

14 MAINS CABLE TAB

This metal bracket works as a strain relief and prevents the detachable power cable from being pulled out accidentally.



L.U.C.A.S 1000

LIGHTWEIGHT ULTRA COMPACT ACTIVE SYSTEM

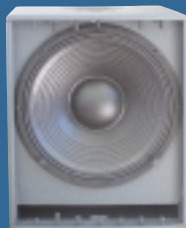
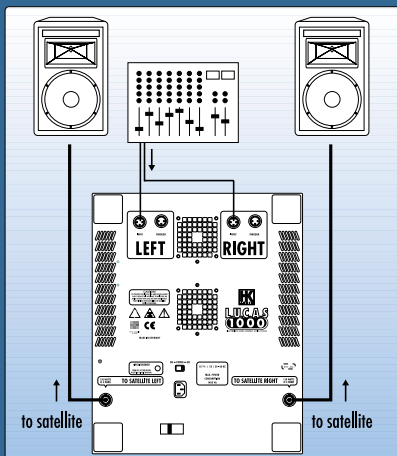
Aluminum speaker stands
optionally available



Power output:
900 watts



For audiences
of up to 200



L.U.C.A.S 1000 Satellite

Frequency response	130 Hz – 19 kHz +/- 3 dB
Axial sensitivity 1W/1m*	101 dB
Maximum SPL @ 1m*	124 dB
Nominal impedance	4 ohms
Low/mid driver	1 x 8"
HF driver	3/4" compression driver
HF horn	100° x 50° CD horn
Crossover frequency	2.5 kHz; 12 dB per octave
HF protection circuit	light bulb
Connectors	1 x Speakon® Neutrik NL 4
Weight	9.5 kg / 21 lbs.
Dimensions (WxHxD):	24.5 cm x 40 cm x 23 cm 9.6" x 15.7" x 9"

L.U.C.A.S 1000 Subwoofer

Frequency response	50 – 130 Hz
Axial sensitivity 1W/1m*	102 dB
Maximum SPL @ 1m*	127 dB
Nominal impedance	8 ohms
Bass woofer	1 x 15"
Power amp	600 W RMS for bass 2x 150 W RMS for satellites
Connectors	2x bal. Line In combo jacks (XLR + 1/4") 2x balanced XLR thru 2x Speakon® satellite out
Weight	42.5 kg / 94 lbs.
Dimensions incl. casters (WxHxD):	44 cm x 54 cm x 65.5 cm 17.3" x 21.2" x 25.8"

*All specifications refer to half-space measurements.

www.hkaudio.com



HK AUDIO® • Postfach 1509 • 66595 St. Wendel • Germany • info@hkaudio.com
INTERNATIONAL INQUIRIES: FAX +49-68 51-905 215 • hkaudio-intl@musicandsales.com

All specifications subject to change without notice / Copyright 2001 Music & Sales GmbH • 07/2001